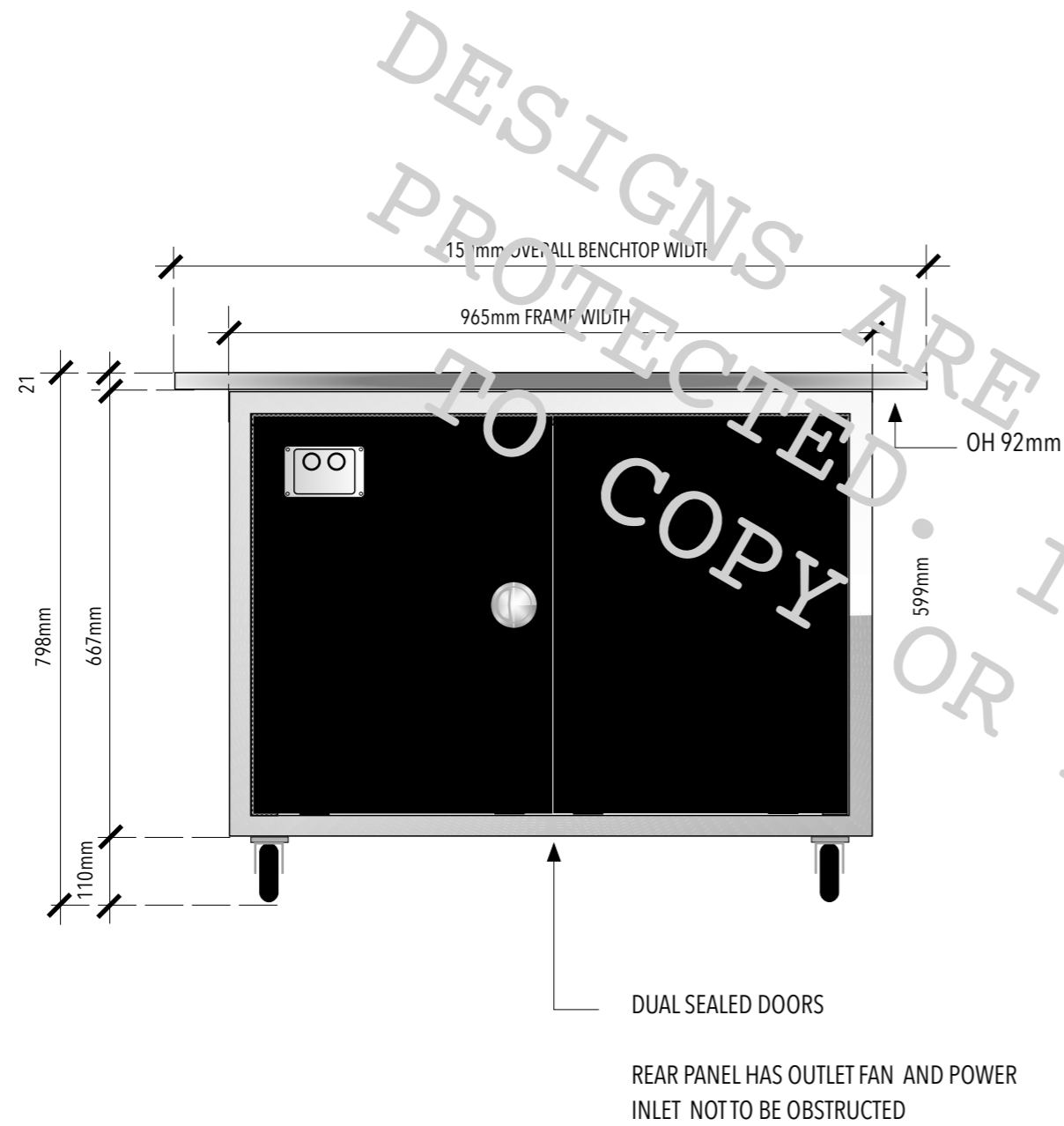
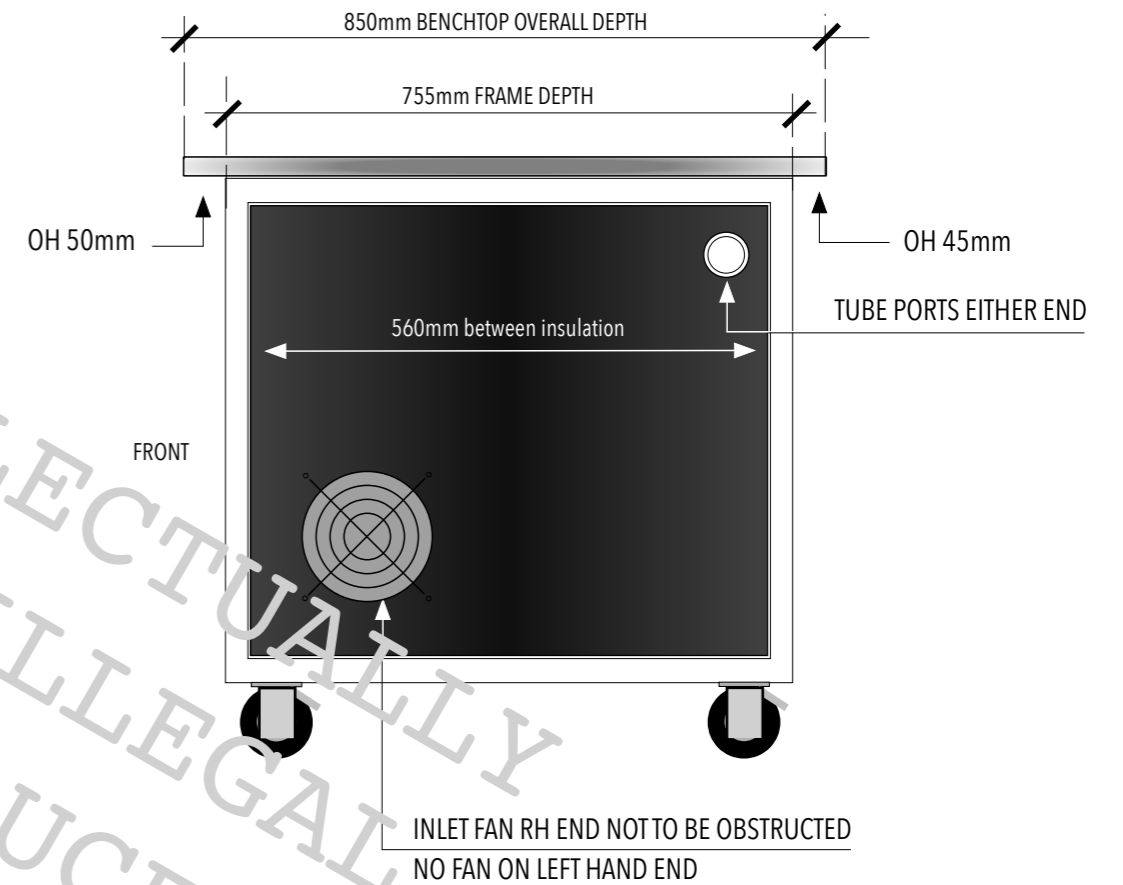


FRONT VIEW



RIGHT SIDE VIEW

SHOWING OPTIONAL MONITOR MOUNTING



PRODUCT DETAILS

EXTERNAL SIZE: 798mm H x 1150mm W x 850mm D
FRAME SIZE: 667mm H x 965mm W x 755mm D
LOAD RATED: 300kg SPREAD BENCHTOP LOAD
CASTORS: SWIVEL ROLLING, BRAKED LOCKING SWIVEL
VACUUM LINE/HOSE OPENING: 80mm DIAMETER TO REAR
INSULATION: FIRE PROOF 50mm SOUND PROOF INSULATION
COOLING: AMBIENT TEMPERATURE RHS TO REAR FLOW TEMPERATURE CONTROLLED 12V FANS
POWER: 10AMP IEC POWER IN 3 PIN PLUG TO REAR OF UNIT WITH SWITCH.
GENERAL UNIT: WELDED AND POLISHED 316 STAINLESS STEEL. MRMDFB BLACK PANELS. HPL MRPB TOP.
OTHER: ALL PARTS SERVICABLE OR REPLACABLE. DBA TESTED REDUCING UP TO 38DBA.

Lab Bench Australia (WE CRE8 Pty Ltd) ACN 168458599 6/10 Shelley Rd Moruya NSW 2537

LAB BENCH AUSTRALIA

SHEET: SPECIFICATION - PUBLIC RELEASE

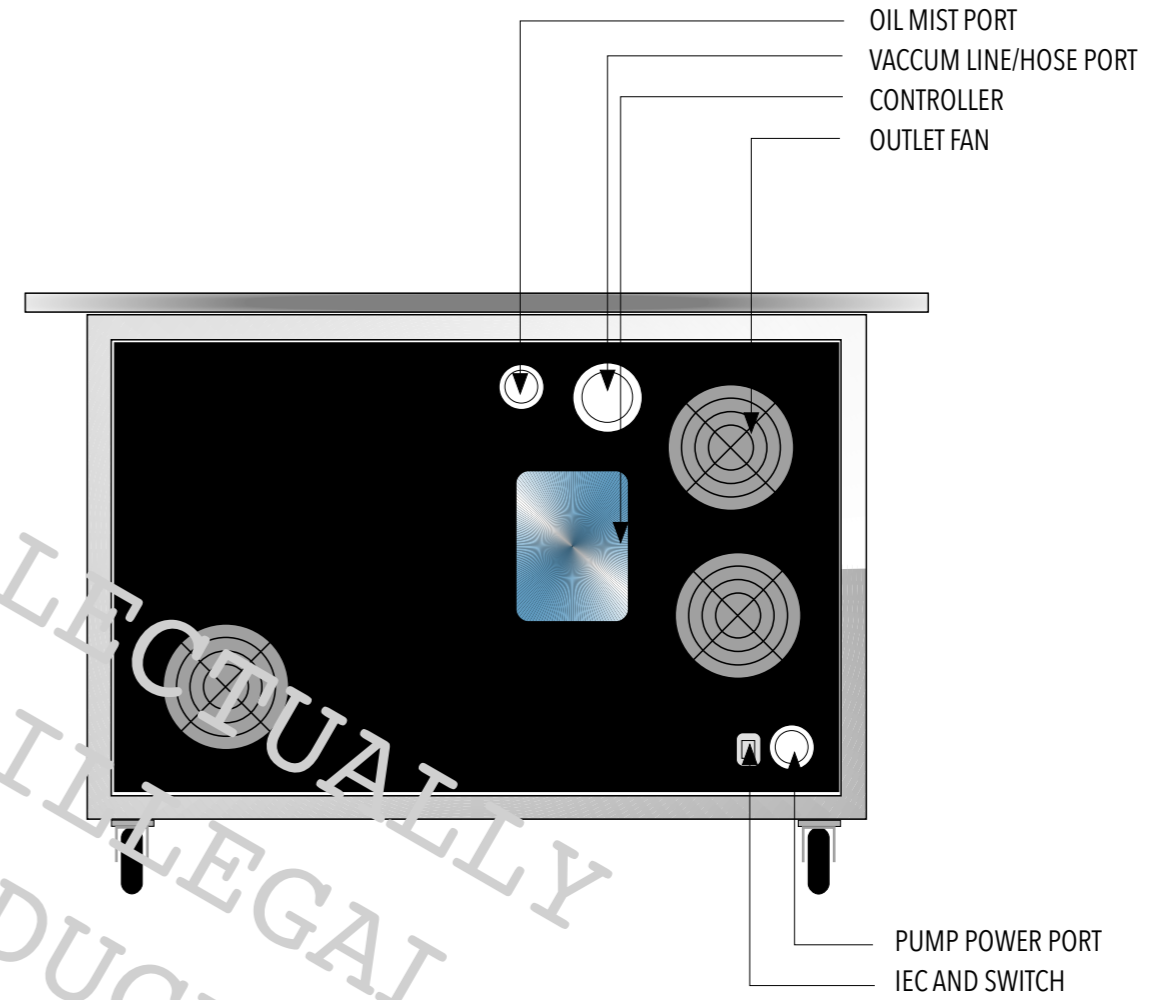
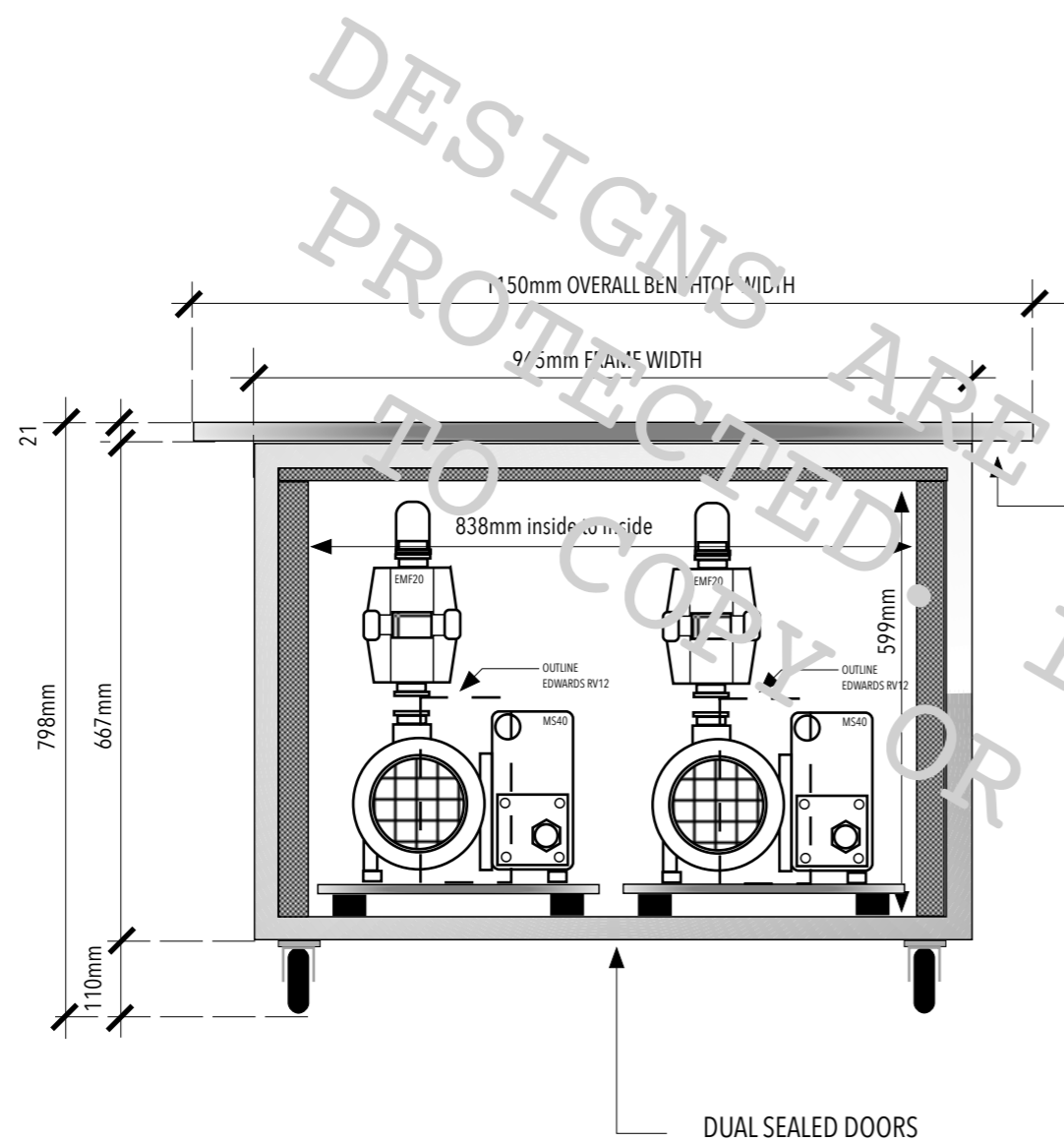
DATE: 2024 - 2025 GEN 2

PRODUCT: LB965AEB

TITLE: INDUSTRIOUS . PAGE 1 OF 2

FRONT VIEW

SHOWING PHYSICALLY LARGER VACUUM PUMP MODEL



DUAL SEALED DOORS

REAR PANEL HAS OUTLET FAN AND POWER INLET NOT TO BE OBSTRUCTED

PRODUCT INCLUSIONS

INTEGRATED VACUUM PUMP ACOUSTIC ENCLOSURE WITH ANTI VIBRATION FLOOR
REMOVABLE HIGH PRESSURE LAMINATE SURFACED BENCHTOP
WELDED AND POLISHED 316 STAINLESS STEEL FRAME

PRODUCT OPTIONS

BENCHTOP MATERIAL: 13mm COMPRESSED LAMINATE
PUMP SLIDE: VACUUM PUMP SLIDE TRAY

LAB BENCH AUSTRALIA

SHEET: SPECIFICATION - PUBLIC RELEASE

DATE: 2024 - 2025 GEN 2

PRODUCT: LB965AEB

TITLE: INDUSTRIOUS . PAGE 2 OF 2